

PIK KEMICAL

Chemical Technologies

A/6

TURBOPOWDER

FOR CLEANING OF TURBOBLOWERS ON GAS SIDE WHILE OPERATING

Technical Support:
pikkemical@pikkemical.it

Orders-Enquires:
pikkemical@pikkemical.it

Ph. +39 0586940120

DESCRIPTION

Product of organic origin, used to clean blades of gas side of exhaust gas turbochargers. Product is in small particles with prismatic form presenting regular granulometry, between 1.3 and 1.7 mm.

APPLICATIONS

It is recommended to begin the treatment on cleaned turboblowers. The product is not to be used if temperature at the injection point is above 590°C.

Product should be injected before the turboblower in the gas inlet, at maximum 50 cm from the gas diffuser, on a daily basis or every two days.

The delivery pressure of the injected product will be less than 0.5 bar and not over 3.

ADVANTAGES

Increases greatly the turboblowers' efficiency keeping washing pressure at top level for a longer period of time.

INSTRUCTIONS

Installation of the TURBOPOWDER dosing equipment:

The dosing equipment is made of a metal tank between 2 and 3 dm³, complete with the valves necessary to fill, put under pressure, assure air outlet and product discharge.

The connection between the tank and gas inlet must not be longer than 1 m. and present a diameter of 12 x 16 mm. (see picture 1)

DOSAGE

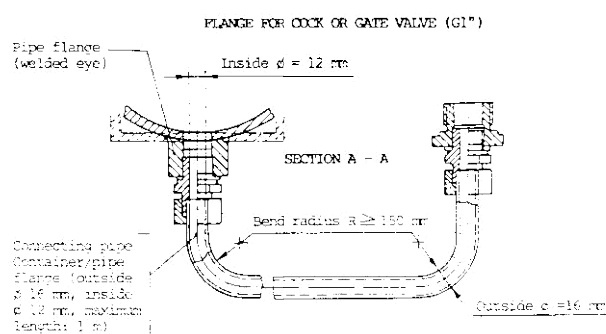
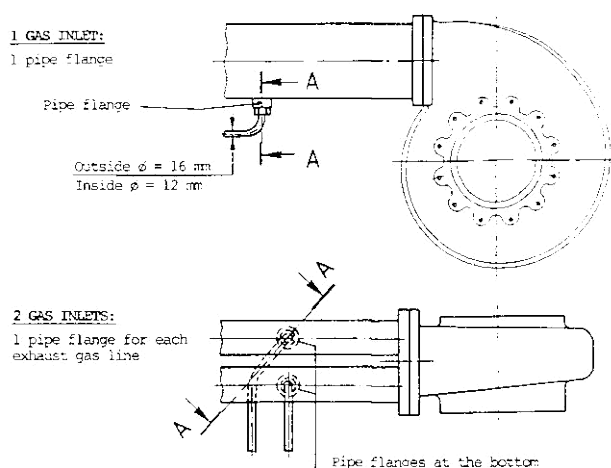
For quantity to be employed please follow the attached dosage table recommended by ABB.

PRECAUTIONS

The product does not require any special precaution.

PACKAGING

Non returnable



TURBO POWDER dosage table

V T R V T C	Quantity of Solids in dm ³ for TURBOBLOWER and cleaning	1 G A S I N L E T			2 G A S I N L E T			3 G A S I N L E T			4 G A S I N L E T		
		CONTAINER		SOLID dm ³	CONTAINER		SOLID dm ³	CONTAINER		SOLID dm ³	CONTAINER		SOLID dm ³
		SIZE	NUMBER		SIZE	NUMBER		SIZE	NUMBER		SIZE	NUMBER	
160/161 184"	0.2...0.1	I	1	1x0.5	I	2	each 0.15	I	3	each 0.1	I	4	each 0.1
200/201 214"	0.3...0.4	I	1	1x0.4	I	2	each 0.2	I	3	each 0.15	I	4	each 0.1
250/251 254"	0.4...0.6	I	1	1x0.6	I	2	each 0.3	I	3	each 0.2	I	4	each 0.15
320/321 304"	0.6...1.0	II	1	1x1.0	I	2	each 0.5	I	3	each 0.35	I	4	each 0.25
400/401 354"	1.0...1.6	II	1	1x1.6	II	2	each 0.8	I	3	each 0.55	I	4	each 0.4
500/501 454"	1.6...2.0	II	1	1x2.0	II	2	each 1.0	I	3	each 0.7	I	4	each 0.5
630/631 564"	2.0...2.4	II	1	1x2.4	II	2	each 1.2	II	3	each 0.8	I	4	each 0.6
714" 750/751 900"	2.4...2.8	III	1	1x2.8	II	2	each 1.4	II	3	each 0.9	I	4	each 0.7